



# ITE Great Lakes District **ANNUAL MEETING** with WTS Central Region

PROGRAM

PROGRAM  
SPONSORED BY:



JUNE 12-14, 2024 | GREEN BAY, WISCONSIN

# Event Schedule



## Wednesday, June 12

		<b>Student Leadership Summit</b> (9:00am - 2:30pm)		
<b>1:00</b>	<b>Registration Opens</b> (KI Lobby S. Counter)		<b>2024 Student Team Design Competition</b> (2:30 - 3:30)	<b>Exhibit Hall Set up</b> (1:00 - 5:00pm) Exhibit Hall C
<b>1:30 - 3:30</b>	<b>GLITE Board Meeting</b>	<b>Ethics Workshop</b> (12:30 - 3:00pm)		
<b>3:30 - 5:30</b>	<b>GLITEy Race</b> (Meet in Exhibit Hall C)			
<b>5:00 - 9:00</b>	<b>Welcome Reception at Lambeau Field</b>		<b>Lambeau Tours</b> (5:30 & 6:00pm)	



## ETHICS WORKSHOP (ADDITIONAL FEE \$60)

WEDNESDAY, JUNE 12, 2024 | 12:30 PM-3:00 PM

PRESENTED BY: INGRID V. ALBRECHT

Transportation engineers who encounter ethical issues should examine them from two perspectives. First, from the broader perspective of a person who has moral obligations to other people. Second, from the narrower perspective of a member of a professional group with shared standards, aspirations, and values. This Ethics Workshop will use case studies to provide guidance and practice for handling ethical issues through both lenses.

**Ingrid V. Albrecht** is the David and Julia Uihlein Professor of Ethics and an Associate Professor of Philosophy at Lawrence University. She has a Ph.D. in Philosophy from the University of Illinois, and a B.A. from Wake Forest University. Her teaching focuses on ethical and value theory and issues in applied and social philosophy.

**2 PDHs**  
**Light refreshments**  
**will be included**

## GLITEY RACE

The GLITEy Race is a fun way to support the Great Lakes District Endowment Fund. The GLITEy Race is a scavenger hunt in the vein of “The Amazing Race”, in which teams of 4-5 people find and complete checkpoint stops given by clues around Lambeau Field. Each stop consists of activities that may be fun, challenging, or even embarrassing, but every stop must be checked off by the checkpoint marshal before they head to the race finish line. The cost is \$10 per person; all proceeds go to the Great Lakes District Endowment Fund. It’ll be a great time for an awesome cause. Each person will sign up individually for the GLITEy Race, and if you don’t have predetermined team members decided, race officials will group you together with a team. If you forgot to register, we have space for you to join day of, just sign up at the starting point 15 minutes before race start. Please email [Tyler Krage \(Tyler.Krage@co.dakota.mn.us\)](mailto:Tyler.Krage@co.dakota.mn.us) for additional information. Bus will depart promptly at 3:45pm for Lambeau Field area for the race.

# Event Schedule



Thursday, June 13				
6:00 - 7:00	5K Walk/Run			
7:00	Registration Opens (KI Lobby S. Counter)			
7:00 - 8:00	Continental Breakfast (Exhibit Hall C)			
8:00 - 10:00	ITE/WTS Welcome & Keynote Speaker (B1, B2, B3)			
10:00 - 10:30	Coffee Break (Exhibit Hall C)			
10:30 - 11:30	Session 1A (A1)	Session 1B (A2)	Session 1C (A3)	Session 1D (A4)
11:30 - 1:30	Lunch: ITE Business Meeting & Awards/Recognitions (B1, B2, B3)			
1:30 - 3:00	Session 2A (A1)	Session 2B (A2)	Session 2C (A3)	Session 2D (A4)
3:00 - 3:30	Snack Break (Exhibit Hall C)			
3:30 - 5:00	Session 3A (A1)	Session 3B (A2)	Session 3C (A3)	Session 3D (A4)
5:00 - 6:00	Traffic Bowl Finals with Hors d'oeuvres and Cash Bar (B1, B2, B3)			
				Student Posters on Display (Exhibit Hall C)
				Exhibit Hall (Exhibit Hall C)

Friday, June 14				
7:00	Registration Opens (KI Lobby S. Counter)			
7:00 - 8:00	Continental Breakfast (Exhibit Hall C)			
8:00 - 8:30	Keynote Speaker (B1, B2, B3)			
8:30 - 9:00	Coffee Break (Exhibit Hall C)			
9:00 - 10:00	Session 4A (A1)	Session 4B (A2)	Session 4C (A3)	
10:00 - 10:30	Snack Break (Exhibit Hall C)			
10:30 - 12:00	Session 5A (A1)	Session 5B (A2)	Session 5C (A3)	
1:30 - 3:30	Lambeau Tours (Arrive by 1:15)			
				Exhibit Hall (Exhibit Hall C)

# Welcome Reception



## CHAMPIONS CLUB AT LAMBEAU FIELD

WEDNESDAY, JUNE 12, 5 PM TO 9 PM

ENJOY FOOD STATIONS AVAILABLE FROM 5:30 PM TO 8 PM

### DIP TRIO:

- Chorizo Queso Dip (GF)
- Buffalo Chicken Dip (GF)
- Spinach Artichoke Dip (GF, V)
- with House Tortilla Chips, Pita Chips, Celery, Carrots

### STADIUM FARE:

- BBQ Pulled Pork (DF, GF) with Hawaiian Slider Rolls,
- Mini Hot Dogs (DF, GF)
- Mini Johnsonville® Brats (DF, GF) with Mini Sausage Buns
- Kemps® French Onion Dip (GF, V) with Potato Chips

*1 drink ticket included, good for beer, wine, and rail drinks. Soda and water included at no extra cost.*

*Welcome Reception is included with full registration, Thursday only registration, two-day student registration, and two-day exhibit hall registration. Welcome Reception Guest (\$60)*

### 1 HOUR STADIUM TOUR | 5:30 AND 6 PM

\$20, sign up in advance

Pick up your Tour Ticket from Susie Paulus when you arrive to the Reception.

### PACKERS PRO SHOP

1265 Lombardi Ave, Green Bay, WI 54304  
open until 7 PM

*Busing will be provided between the Hyatt and Lambeau Field from 3:00 PM to 9:30 PM*

*If driving, use the Invisalign Gate, parking is free!*



# Lambeau Field Tours

## JUNE 12 | DURING THE WELCOME RECEPTION

**\$20: SIGN UP WHEN YOU REGISTER**

Enjoy an abbreviated 1-hour Lambeau Field Tour, including:-

- Visit the Bob Harlan Plaza
- Walk through a Gameday Suite
- Experience the Players' Tunnel Tour

## JUNE 14 | 1:00 - 3:00

**\$45: SIGN UP WHEN YOU REGISTER**

Enjoy a full 2-hour Lambeau Field Tour, including:

- Visit the Bob Harlan Plaza
- Walk through a Gameday Suite
- Experience the Players' Tunnel
- View the newly-reconstructed South End & Roof Top Viewing Deck
- View the Lee Rummel Press Box & Visitors' Locker Room
- Access to the Hall of Fame is also Included

# About the Speakers



## Wisconsin Welcome: Angela Adams

WisDOT Division of Transportation Investment Management, Deputy Administrator

Angela Adams has been with the Wisconsin Department of Transportation for over 26 years. She is currently serving as the Deputy Administrator for the Division of Investment Management and has been in this role since February 2023. Prior to the Deputy Administrator position, she served as the Division of Transportation Systems Development (DTSD) Southwest Region Deputy Director for more than 7 years. Throughout her career, she has held various engineering leadership roles, including region maintenance and traffic operations manager and state traffic engineer. Angela has a bachelor's degree in Civil Engineering from the University of Wisconsin-Platteville and is a registered Professional Engineer.



## ITE International: John Davis

John Davis is City Traffic Engineer in Des Moines, IA, and has been an active member of ITE since he began his transportation career more than 35 years ago. He has worked with both

public agencies and private clients to provide effective and efficient solutions to their traffic planning, safety, operational, engineering and management concerns. He is a registered professional engineer in multiple states with multiple certifications from the Transportation Professional Certification Board. John has held office in five ITE Districts and Sections and has lent his leadership and expertise to several ITE Councils and Committees over the years. He is currently serving as the ITE President. John has been an integral part of the success of ITE's Annual Collegiate Traffic Bowl, leading its production for the past 14 years.



## WTS International: Sara Stickler

Sara Stickler is President & CEO of WTS International. Joining the organization in 2018, Sara works to set and execute WTS International's organizational strategic

priorities, working closely with the WTS International Board of Directors to continuously assess and develop the WTS brand and the association's programs. Sara implements growth and retention strategies, and she fosters meaningful relationships with WTS chapters, members, key industry stakeholders and other professionals to elevate the organization. Sara also works with the WTS Foundation and its Board of Directors to realize its mission of supporting the next generation of transportation professionals and advancing the principles of WTS.



## KEYNOTE SPEAKER

### Aaron Popkey | Green Bay Packers Director of Public Affairs

**Aaron Popkey** is director of public affairs for the Green Bay Packers. A veteran member of the organization's leadership team, Popkey manages relationships with key stakeholders in the community, including local, state and federal government and civic officials, as well as regional economic development officials. He also oversees external communications and media relations for

all non-football departments. Through the course of his career, Popkey has been involved in many of the organization's major events of the past 30-plus years, including preparations to host the 2025 NFL Draft. A native of Green Bay, Popkey graduated from UW-Madison's School of Journalism and Mass Communication and began his Packers career in 1993 as a public relations intern.

### Thursday, June 13th, 9am: 2025 NFL Draft

The 2024 NFL draft brought over 700,000 people to downtown Detroit with the help of GLITE and WTS membership. The Green Bay Packers are preparing to host the 2025 NFL Draft and will be giving a peak into the planning and preparation required to host such an enormous event! Learn how the Packers have involved state, regional, and local stakeholders to ensure logistics, lodging, communications, and a huge stage all fit together to make the 2025 Draft an amazing event!

### Friday, June 14th, 8am:

#### Titletown Community Development

The Green Bay Packers spearheaded the Titletown Community Development that invites people to play, stay, eat, work, and live in a truly multi-use development combining lodging, health care, restaurants and breweries, sports, business spaces, apartments, and townhomes. Learn about how project was conceived and brought to life!

# Student Events



## Student Design Competition | Thursday June 13

School	Section	Participants
Purdue University (PU)	ITE Indiana Section	Carmen Caserio
		Myles Overall
		David Holguin
University of Michigan (UoM)	ITE Michigan Section	Marina Campoy-Lovasco
		Celine Hartanto
		Yunyang Ma
		Yifei Sun
Michigan State University (MSU)	ITE Michigan Section	John Racine

## Student Poster Competition | Wednesday June 14, 2:30 - 3:30pm

School	Section	Participants
Purdue University (PU)	ITE Indiana Section	Myles Overall
Western Michigan University (WMU)	ITE Michigan Section	Baraah Qawasmeh
Wayne State University (WSU)	ITE Michigan Section	Anahita Zahertar
		Nafis Fuad
University of Michigan (UoM)	ITE Michigan Section	Zachary Jerome
		Zihao Wang

## ENDOWMENT FUND

The Endowment Fund was created to serve as an additional outlet for returning value back to the members of the District. At this stage, the Endowment Fund prioritizes helping young members and students to attend district meetings with monetary awards to be used to travel, lodging, registrations, and other associated costs. The Endowment Fund is intended to give aid to the members who need it most, whether that means agency members, students, or members whose workplaces might not make meeting reimbursements possible. As of this meeting, the Endowment Fund is up to \$10,000. The Endowment Fund, along with help from one of our Platinum Sponsors, Harrison Consulting, is pleased to have awarded monetary aid to seven members! There will be a silent auction throughout the Annual Meeting to raise funds for the Endowment Fund.



# Student Events (cont'd)



The Traffic Bowl Semi-Finals will begin at 3:15pm on Thursday June 13 with the Finals starting at 5:00pm.

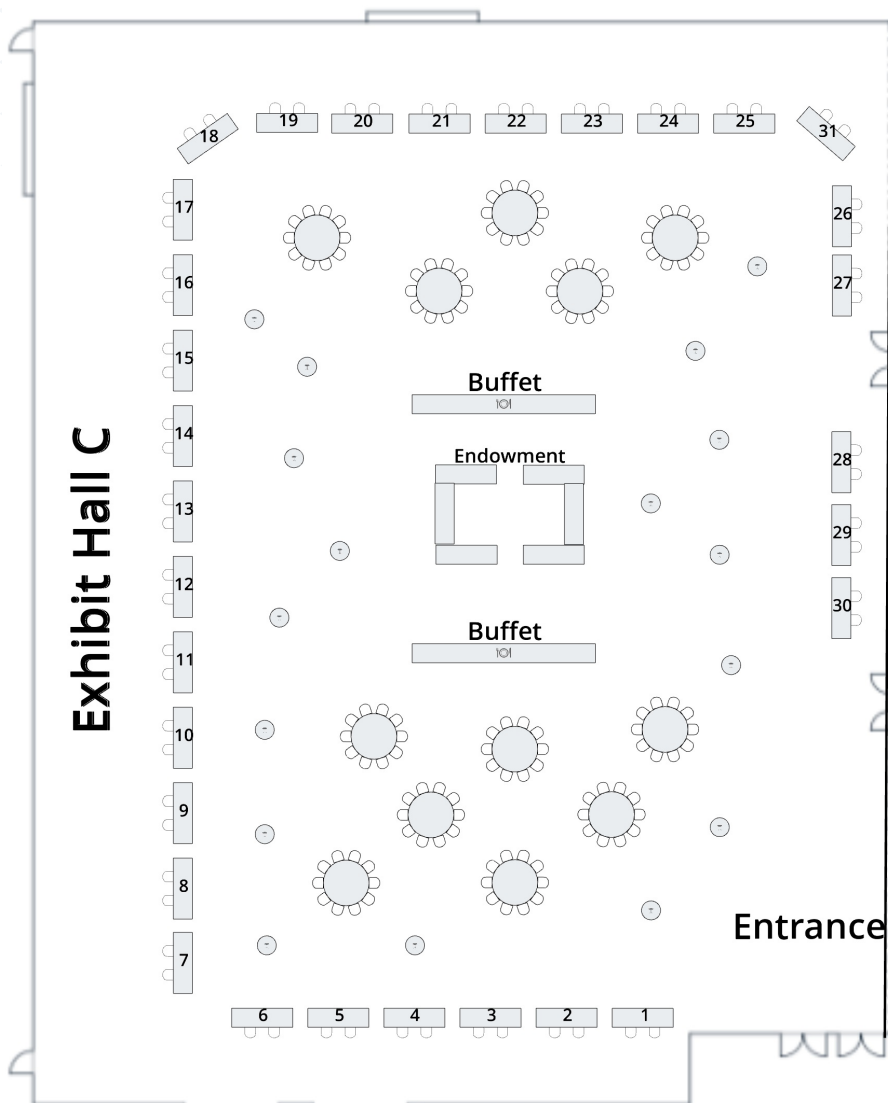
Student Traffic Bowl		
School	Section	Participants
University of Wisconsin-Madison (UW-Madison)	ITE Wisconsin Section	Cesar Andriola
		Keke Long
		Rei Tamaru
		Jing Zhu
Purdue University (PU)	ITE Indiana Section	Myles Overall
		David Holguin
		Carmen Caserio
Wayne State University (WSU)	ITE Michigan Section	Bedan Khanal
		Nafis Fuad
Michigan State University (MSU)	ITE Michigan Section	Austin Detweiler
		John Racine
		Colin Pearson
		Magdalena Cavka
University of Michigan (MSU)	ITE Michigan Section	Jisoon Lim
		Zachary Jerome
		Ben Rosenblad
		Taewhan Ko
Michigan Technical University (MTU)	ITE Michigan Section	Caleb Mensah
		Carmenia Kamah
		Brenda Chepngeno
		Yingtong Tan
Western Michigan University (WMU)	ITE Michigan Section	Baraah Qawasmeh
		Sia Mwende
		Norran Novat
		Johnathan Tapp

There will be a student & young member Karaoke event on Thursday Evening at the Rabbit Hole. Reach out to Cole Villalobos or Madison Carlson for more info.

# Exhibit Hall Map



Exhibitor	Booth #	Exhibitor	Booth #
ALCEA ASSA ABLOY	23	Millerbernd Manufacturing	7
CATT Lab - University of Maryland	17	Miovision	27
Civiltech Engineering	22	MoboTrex	31
Cubic	6	NoTraffic Ltd	8
D2 Traffic Technologies	3	Q-Free	13
Fortran Traffic System Limited	9	Quality Counts, LLC	21
Gewalt Hamilton Associates, Inc.	12	Rodel Roundabout Analysis Software	25
GRAEF	18	RTC Manufacturing	16
HDR	15	SRF Consulting Group Inc.	11
HNTB	30	TAPCO	29
inVISION Studios Inc.	5	Traffic Control Corporation	10
Kimley-Horn	28	Traffic Control Products, Inc.	14
KL Engineering	26	TranSmart LLC	24
Lakeside Engineers	20	WBK Engineering, LLC	4
McTrans Center - University of Florida	2	Wooster and Associates	1
Mid American Signal Inc.	19		





# THANK YOU TO THE GREAT LAKES DISTRICT SPONSORS

## PLATINUM SPONSORS



Harrison  
Consulting Solutions  
ENGINEERS • ARCHITECTS • SURVEYORS



Expect More. Experience Better.



## GOLD SPONSORS



TRAFFIC CONTROL CORPORATION

## SILVER SPONSORS



AMERICAN STRUCTUREPOINT INC.



ALLIANT



## BRONZE SPONSORS



## FRIEND SPONSORS





## **PE Continuing Education:**

Visit <https://www.pathlms.com/ite/courses/69651> to submit your PDHs. We recommend using Google Chrome or Firefox to view this link.

1. Click on the first session you attended
2. Log in to your ITE account (If you do not have an account; you can create an account by clicking where it says, If you do not have a username and password, click here to create a new account.)
3. Click on the Survey Tab
4. Answer the 2 questions
5. Click Next
6. Click Submit Answers
7. Click on Go to the Next Item
8. Print out your certificate

Go back to the top of the page and click on EVENT INFO ADDED HERE and repeat the steps above to submit PDHs for all the sessions you attended.

***All meeting attendees will have 60 days to complete the evaluation provided and receive their certificate. After 60 days the evaluation will not be available.***

*All individual presentations in Sessions 1 - 5 are eligible for 0.5 CE.*

If you have questions, please contact **Eunice Thoya** at [ethoya@ite.org](mailto:ethoya@ite.org)

---

## **AICP Certification Maintenance:**

Visit <https://www.planning.org/events/eventmulti/9291403/> to submit your Information.  
See the list on the next page for what sessions qualify.

# AICP - CM Credits



The following sessions qualify for Certification Maintenance for AICP.

Date	Session	Presentation	Available AICP-CM Credits
Thursday, June 13	Session 1A: Successful Community Partnerships	Micromobility Primer	0.5
		Reimagining WIS 175 by Partnering with Local Officials and the Community	0.5
	Session 1B: To Emit or Not Emit - That's What We're Tracking	Implementing Electric Vehicle (EV) Charging for Municipalities	0.5
	Session 2B: Safe System - Vulnerable Road Users	How to Use the Safe System Approach to Ensure Pedestrian Safety at Roundabouts	0.5
	Session 2D: Transportation Equity, Health, and Safety	Uphill Both Ways: Getting Kids to School Safely with Demonstration Projects and School Zone Speed Limits	0.5
	Session 3D: Transportation to Address Diverse Neighborhood Needs	Invest in Cook: Supporting Local and Regional Transportation Infrastructure	0.5
		Multimodal Transportation Planning: A Holistic Method	0.5
		A Community-Driven Vision Towards Livable Streets	0.5
Friday, June 14	Session 4A: Experiential Learning & Your Personality	What Do You Want to be When You Grow Up? The Benefits of Experiential Learning	0.5
		What is your Problem Solver Profile?	0.5
	Session 4C: Programs and Strategies to Manage Assets	Michigan DOT Ancillary Structures Asset Management Program	0.5
	Session 5A: Innovative Project Showcase	Pontiac Revitalization: Auburn Avenue HSIP Project Case Study	0.5
		Building for the 21st Century - Upgrading Kalamazoo's Transportation Network	0.5
		Milwaukee County East-West Bus Rapid Transit (BRT) Project	0.5
Session 5B: The Need to (Manage) Speed	Creating a Safe & Walkable Community: From Study to Implementation	0.5	

# Presentations



## Thursday, June 13

Session 1: 10:30 - 11:30 am

### 1A: Successful Community Partnerships

Moderator: Brenda Schoenfeld, HNTB

### 1B: To Emit or Not Emit - That's What we're Tracking

Moderator: Jamie Dalheim, KL Engineering

### 1C: Traffic Modeling and Planning Technology - Microsimulation

Moderator: Erin Jordan, SEH

### 1D: ITE Engagement Session

#### Micromobility Primer

Presenters: HNTB (Jane Wilberding & Kaci Crowley)

#### Revolutionizing Emission tracking in transportation with Connected Vehicle Data

Presenter: Flow Labs (Nathan Wade)

#### WIS54 Mason Street: Using Vissim Dynamic Traffic Assignment on Urban Arterials

Presenters: GRAEF (Alex Motl) WisDOT (Lucas Beckwith)

Invite Only

#### Reimagining WIS 175 by Partnering with Local Officials and the Community

Presenters: WisDOT (Doug Cain & Bunmi Olapo), GRAEF (Andre Ost)

#### Implementing Electric Vehicle (EV) Charging for Municipalities

Presenters: KL Engineering (Jacob Joyal), City of West Bend (Max Marechal)

#### Measuring Traffic Demand Along a Highly Congested Route (WIS63)

Presenter: KL Engineering (Kevin Wehner)

## LUNCH: ITE BUSINESS MEETING & AWARDS/RECOGNITIONS

Session 2: 1:30 - 3:00 pm

### 2A: Innovative Technical Tools to Assist with Decision Making

Moderator: David Addison, Lanham Engineering

### 2B: Safe System - Vulnerable Road Users

Moderator: Alex Motl, GRAEF

### 2C: Freight, Trucks, De-tour - No Problem

Moderator: Sara Schoenmann, JT Engineering

### 2D: Transportation Equity, Health, and Safety

Moderator: Rachel Burnham, SRF Consulting

#### Innovations in Traffic Signal Performance: Implementing Detection-Free ATSPMs for Improved Traffic Flow

Presenter: INRIX (Steve Remias)

#### How to Use the Safe System Approach to Ensure Pedestrian Safety at Roundabouts

Presenter: MTJ Roundabout Engineering (Mark Johnson)

#### Wind Towers and Steel Beams and Houses, Oh My! OSOW Travel in Southwest Wisconsin

Presenters: WisDOT (Ruchi Dutta) AECOM (Lee Gibbs)

#### Beyond Crash & Fatality Data: Using Behavioral Metrics to Improve Roadway Safety

Presenter: Flow Labs (Nathan Wade)

#### Multi-Modal Traffic Signal Parameters Deep Dive

Presenter: Dakota County (Tyler Krage)

#### Building a Network: Increasing Bicycle Infrastructure, Utilization, and Safety

Presenter: Purdue University (Jay Wasson)

#### WIS 125: Lessons Learned from WisDOT's First Completed Design Build Project

Presenters: Michael Baker International (Jason Sadowski & Georgia Vergou-Ornek)

#### All Streets should be Complete Streets

Presenters: WSP (Jennifer Pangborn), City of Milwaukee (David Tapia)

#### Next Generation Signal Timing Optimization Process using Automated Traffic Signal Performance Measures

Presenters: Mead&Hunt (Justin Effinger) Miovision Technologies (Muhammad Miah)

#### Downtown Pedestrian, Bike Corridors Are Not Just for Big Cities (Waterloo, IA)

Presenter: Stanely Consultants (Tyler Grau)

#### Truck Parking: Public-Private-Partnerships Toward Improving Freight Mobility on a Regional and National Scale

Presenter: STV (James Kuhr)

#### Uphill Both Ways: Getting Kids to School Safely with Demonstration Projects and School Zone Speed Limits

Presenters: SEH (Erin Jordan) Minnesota DOT (Mark Wagner)

# Presentations (cont'd)



Thursday, June 13

Session 3: 3:30 - 5:00pm

<b>3A: MUTCD - What's New &amp; Future Plans for Implementation</b> Moderator: Georgia Vergou-Ornek, Michael Baker International	<b>3B: Safety - Data and System Management</b> Moderator: Cassie Olsen, Michael Baker International	<b>3C: Transit Technology and Project Highlights</b> Moderator: Colleen Hill-Stramsak, Macomb County Department of Roads	<b>3D: Transportation to Address Diverse Neighborhood Needs</b> Moderator: Sara Pflaum, MnDOT
MUTCD - Executive Summary and Overview of the 11th Edition Presenter: FHWA (Kurt Walker)	Improving Safety With Near-Miss Data Presenter: CHA (Robert Fijol)	On Spatial Variation in Transit Travel Time Reliability: A Metro Detroit Case Study Presenter: Wayne State University (Oluwanifemi Adegbulugbe)	Invest in Cook: Supporting Local and Regional Transportation Infrastructure Presenter: Cook County (Laura McFadden)
The Wisconsin Manual on Uniform Traffic Control Devices (WMUTCD) Presenter: WisDOT (Matt Rauch)	Leveraging Near-Miss Conflict Data for Enhanced Counter-Measure Analysis Presenter: Quality Counts (Steven Hollenkamp)	Railroad Preemption Reviews & Joint Inspection: Lessons Learned from the Midwest Presenter: Mead&Hunt (Joanna Bush)	Multimodal Transportation Corridor Planning: A Holistic Method Presenters: SEH (Adrian Diaz Jr. & Erin Jordan)
Illinois Adoption of the National MUTCD Presenter: IDOT (Kyle Armstrong)	Safety - Let's Understand our Roadways and Communicate with Drivers Presenter: INRIX (Steve Remias)	Human Behavioral Factors for Crashes at Short Storage Highway Railroad Grade Crossings: A Case Study Using Preceptual Cycle Model Presenter: Wayne State University (Bedan Khanal)	A Community-Driven Vision Towards Livable Streets Presenters: SEH (Mark Nolan) City of Minneapolis (Jasna Hadzic-Stanek)

# Presentations (cont'd)



## Friday, June 14

Session 4: 9:00 - 10:00 am

### 4A: Experiential Learning & Your Personality

Moderator: Jane Wilberding, HNTB

What Do You Want to be When You Grow Up? The Benefits of Experiential Learning

Presenter: Milwaukee School of Engineering (Mitzi Dobersek)

What is your Problem Solver Profile?

Presenter: HNTB (Jenn Lacke)

### 4B: Connected Vehicle Architecture & Operating Principles

Moderator: Ryan Bush, ms consultants

Implementing an Open-Source Containerized Microservice-Based ITS Architecture for Managing a Connected Vehicle Environment

Presenter: Econolite (David Spinney)

Drive Ohio - V2X Applications: Standard Operating Principles

Presenter: HNTB (Nick Seling)

### 4C: Programs and Strategies to Manage Assets

Moderator: Lauren Maenhout, EMCS

Wisconsin Signal Timing Optimization Project: New Program, Proven Strategies

Presenters: WisDOT (Brian Roper & Heather Sackman), raSmith (Pat Hawley)

Michigan Ancillary Structures Asset Management Program

Presenters: HNTB (Dani Booms & Dorinda McCombs)

## SNACK BREAK

Session 5: 10:30 - 12:00 pm

### 5A: Innovative Project Showcase

Moderator: Ryan Jacox, Benesch

Pontiac Revitalization: Auburn Avenue HSIP Project Case Study

Presenters: Hubbell, Roth & Clark, Inc. (Jordan Hankin & Cole Villalobos)

Building for the 21st Century - Upgrading Kalamazoo's Transportation Network

Presenter: City of Kalamazoo (Dennis Randolph)

Milwaukee County East-West Bus Rapid Transit (BRT) Project

Presenter: HNTB (Mike Zabel)

### 5B: The Need to (Manage) Speed

Moderator: Jenn Lacke, HNTB

Evaluating Dynamic Speed Feedback Signs for Speed Management at Roundabouts in Rural-to-Urban Transition Areas

Presenter: Purdue University (Myles Overall)

Gravel Roads: The Dirt on Speed

Presenter: Road Commission for Oakland County (Alex Rucinski)

Creating a Safe & Walkable Community: From Study to Implementation

Presenter: LJB Engineering (Tom Flask)

### 5C: Work Zone and ITS Traffic Management

Moderator: Mike Siffer, GAI Consultants

Corridor Communication Systems: Adapting ITS Design to Dynamic Schedules and Multiple Project Deployments

Presenters: Strand (Adam Walter) WisDOT (Kimberly Bradley)

Using Traffic Data to Enhance Maintenance of Traffic on Reconstruction Projects

Presenters: Iteris (Kristel Bassett & Adam Danczyk)

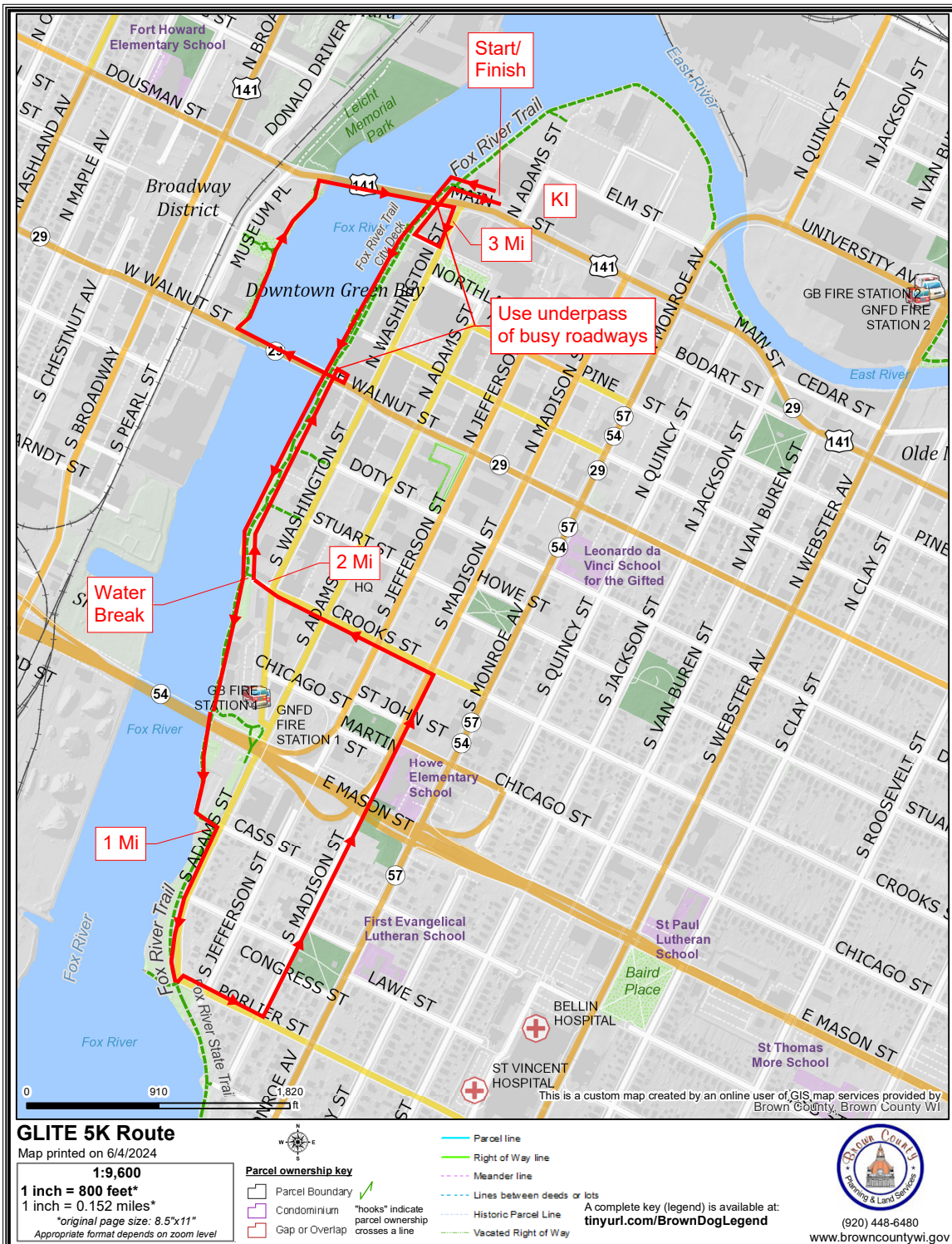
Traffic Management and Public Information during Freeway Construction

Presenters: HNTB (Ryan Luck, Toni Keegan, & Rachel Andreoli) WisDOT (Stephanie Leranthe)

# 5K Run/Walk



Join your fellow colleagues for a morning walk or run along the Fox River and through parts of historic downtown Green Bay. We will meet in front of the Hampton Inn at the Fox River / East River Trail head. For those who have that competitive streak the official start will begin just after 6am. Water will be provided along the route and at the finish. If running is not your thing, still come out and cheer on your friends and get some early morning sun to jump start your day!



# Your one-stop shop for full-service consulting.

Transportation • Transit • Traffic • Structural  
Roadway • Environmental

## Kimley»Horn

Expect More. Experience Better.



### OUR MIDWEST LOCATIONS



### CONFERENCE ATTENDEES



Jack Olsson  
St. Paul, MN



Morgan Nelson  
St. Paul, MN



Bryce Statz  
St. Paul, MN



Meg Hunter  
Indianapolis, IN





## Consulting Solutions

ENGINEERS \* ARCHITECTS \* SURVEYORS

Where *Companies*  
And *Careers*



**Come Together To *Grow***

*Your Boutique Search Firm That Specializes In Enhancing  
Careers And Building Companies In The Engineering,  
Architecture, And Environmental Markets*

**[www.HarrisonConsultingSolutions.com](http://www.HarrisonConsultingSolutions.com)**



## Bringing People Together, Expanding Opportunity

At HNTB, we're committed to ensuring all voices are heard. We collaborate with our partners and clients to expand opportunity and leverage the power of transportation, helping connect women to new paths that influence the built environment.



**Your career  
starts here**



The HNTB Companies  
Infrastructure Solutions

[hntb.com](http://hntb.com)

# Excellence in Engineering<sup>SM</sup>

## Transportation

- Asset Management
- Aviation
- Bridges and Structures
- Bike and Pedestrian Facilities
- Tollways
- Roundabouts
- Rural Highways
- Urban Freeways
- Construction-Related Services
- Public Involvement
- Traffic Signals
- Traffic/Planning
- Survey
- ITS
- Right-of-Way
- Urban Arterials
- Environmental Compliance



Beltline Flexlane | Madison, WI



Ravinia Avenue Roundabout | Orland Park, IL



County Road 200 South Over I-65 | Bartholomew County, IN



[www.strand.com](http://www.strand.com)  
12 Locations • 608.251.4843

Multidisciplinary firm serving public and private sectors

# DID YOU KNOW?



RRFBs increase yield rates by as much as 96%\*

Pedestrian safety starts with the proper countermeasures. Ensuring pedestrians have access to highly visible, designated crosswalks is a crucial step in securing their safety.

Find us  
at booth  
**#29**



\*A city of St. Petersburg, FL Analysis

# BAXTER & WOODMAN

Consulting Engineers

Specializing in the Planning,  
Design & Construction of  
Public Infrastructure

- Water • Wastewater • Construction
- Transportation • Spatial Technology
- Water Resources • SCADA & Automation

PERSONAL  
SERVICE.  
QUALITY  
ENGINEERING.

[baxterwoodman.com](http://baxterwoodman.com)



Coast to Coast **Data Collection Services** for Clients Nationwide

**GHA** GEWALT HAMILTON  
ASSOCIATES, INC.  
625 Forest Edge Drive - Vernon Hills, IL 60061  
847.478.9700 [GHA-Engineers.com](http://www.gha-engineers.com)

Comes see us in the Exhibition Hall!  
<http://www.gha-engineers.com/>





# Kinetic<sup>®</sup> Mobility

MOBILITY REIMAGINED.

Unify traffic operations and make faster, more informed decisions saving crucial time when every second counts.



*We create lasting solutions to strengthen communities.*

Experts in planning, engineering, and landscape architecture

#### Traffic Services:

- Traffic operations analysis
- Deterministic and micro-simulation analysis
- Intersection and interchange analysis
- Traffic signal and roundabout design
- Traffic signal timing
- Predictive safety analysis
- Signing and pavement marking design
- Work zone traffic control & detour plans
- Intersection control evaluations
- Traffic management plans
- Railroad preemption design/timing

#### Grant Assistance:

- Feasibility studies
- Project prioritization
- Grant writing
- Benefit-Cost analysis
- Grant management & reporting

[www.srfconsulting.com](http://www.srfconsulting.com)



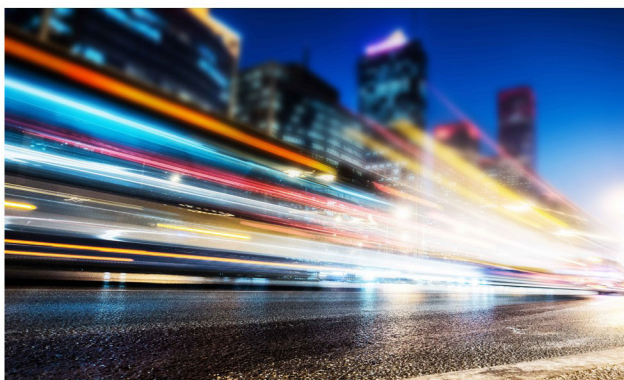
**TRAFFIC CONTROL  
CORPORATION**

***THEIR WHEN IT COUNTS!***



Providing products and services to achieve vision zero

Proud Sponsor of Great Lakes District ITE



traffcon.com  
sales@traffcon.com




Proudly serving:  
WI, IL, IN, MI & OH



# Ideas transform communities


hdrinc.com | Chicago 773.380.7900



**ALLIANT**

- TRAFFIC ENGINEERING
- TRANSPORTATION
- ITS
- DESIGN-BUILD


[www.alliant-inc.com](http://www.alliant-inc.com)



AMERICAN  
**STRUCTUREPOINT**  
INC.

- ARCHITECTURE + INTERIORS
- CIVIL ENGINEERING
- CONSTRUCTION SOLUTIONS
- ENVIRONMENTAL SERVICES
- INVESTIGATIVE
- IT SOLUTIONS
- LAND SURVEYING
- PLANNING + ECONOMIC DEVELOPMENT
- STRUCTURAL ENGINEERING
- TRANSPORTATION
- UTILITY INFRASTRUCTURE

[www.structurepoint.com](http://www.structurepoint.com)





**VALUE FOCUSED.  
COMMUNITY MINDED.  
QUALITY DRIVEN.**

[www.benesch.com](http://www.benesch.com)



**KL Engineering**  
[A] Better Experience



**WE'RE  
HIRING!**

**EXPERIENCED  
TRAFFIC  
ENGINEERS**

**APPLY NOW**



[klengineering.com](http://klengineering.com)



MADISON | GREEN BAY | MENOMONIE | GERMANTOWN



**Delivering A Better  
Tomorrow For All**



**Indianapolis**  
3502 Woodview Trace, Suite 150  
Indianapolis, IN 46268



[LOCHGROUP.COM](http://LOCHGROUP.COM)



**HCS SUITE 2024**



**3 Powerful Software  
One Plan  
Best Value**

**UF** Transportation Institute  
UNIVERSITY of FLORIDA | **McTrans**



ARCHITECTS. ENGINEERS. PLANNERS.

## THE COMMUNITY ADVANCEMENT FIRM

At OHM Advisors, multidisciplinary teamwork focused on people-first solutions yields ideas that aren't just different.

*They're better.*

Share your vision with us, and together we'll create great places for people.

**OHM-Advisors.com | 888.522.6711**

INVENTORY. SERVICE. QUALITY. VALUE.



Let Path Master lead you on the path to  
**Where Traffic Meets Technology.**

**330.425.4994**

1960 Midway Drive  
Twinsburg, Ohio 44087



**WWW.PATHMASTERINC.COM**



IMPROVED MOBILITY.  
MULTIMODAL SOLUTIONS. ALIGNED VISIONS.

## SOLVING YOUR MOST COMPLEX CHALLENGES.

With SEH, you are a true partner and collaborator.

Building a Better World for All of Us®

Engineers | Architects | Planners | Scientists  
800.325.2055 | [sehinc.com/subscribe](http://sehinc.com/subscribe)



Partnering for Solutions that Work for You

# TranSmart

— AN ATLAS COMPANY —

- Traffic Engineering and Design
- Roadway Design
- Electrical Engineering
- Transportation Electrification
- Structural Engineering
- Multimodal Transportation
- Intelligent Transportation Systems (ITS)
- Connected Vehicle Implementation
- Construction Management and Inspection
- Program Management
- Telecommunications and Utilities

Let's connect!

**312-922-1700**  
[info@TranSmartinc.com](mailto:info@TranSmartinc.com)  
[TranSmartinc.com](http://TranSmartinc.com)



# Save the Date!

Join us next year for the

## GREAT LAKES ANNUAL MEETING

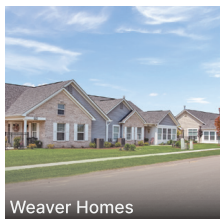
INDIANAPOLIS, IN

# June 8-10, 2025

*additional information to come.*



Let Wooster drive  
your next development



☎ 412-921-3303  
@ info@dewooster.com  
🌐 www.dewooster.com  
📍 Pittsburgh, PA • State College, PA



# Hotel Map





*Conference branding and program by:*

**Kimley»»Horn**